






Bead Legend


 Chart #:A
11-42BF
Matte Opaque Dark Yellow
Count:1501

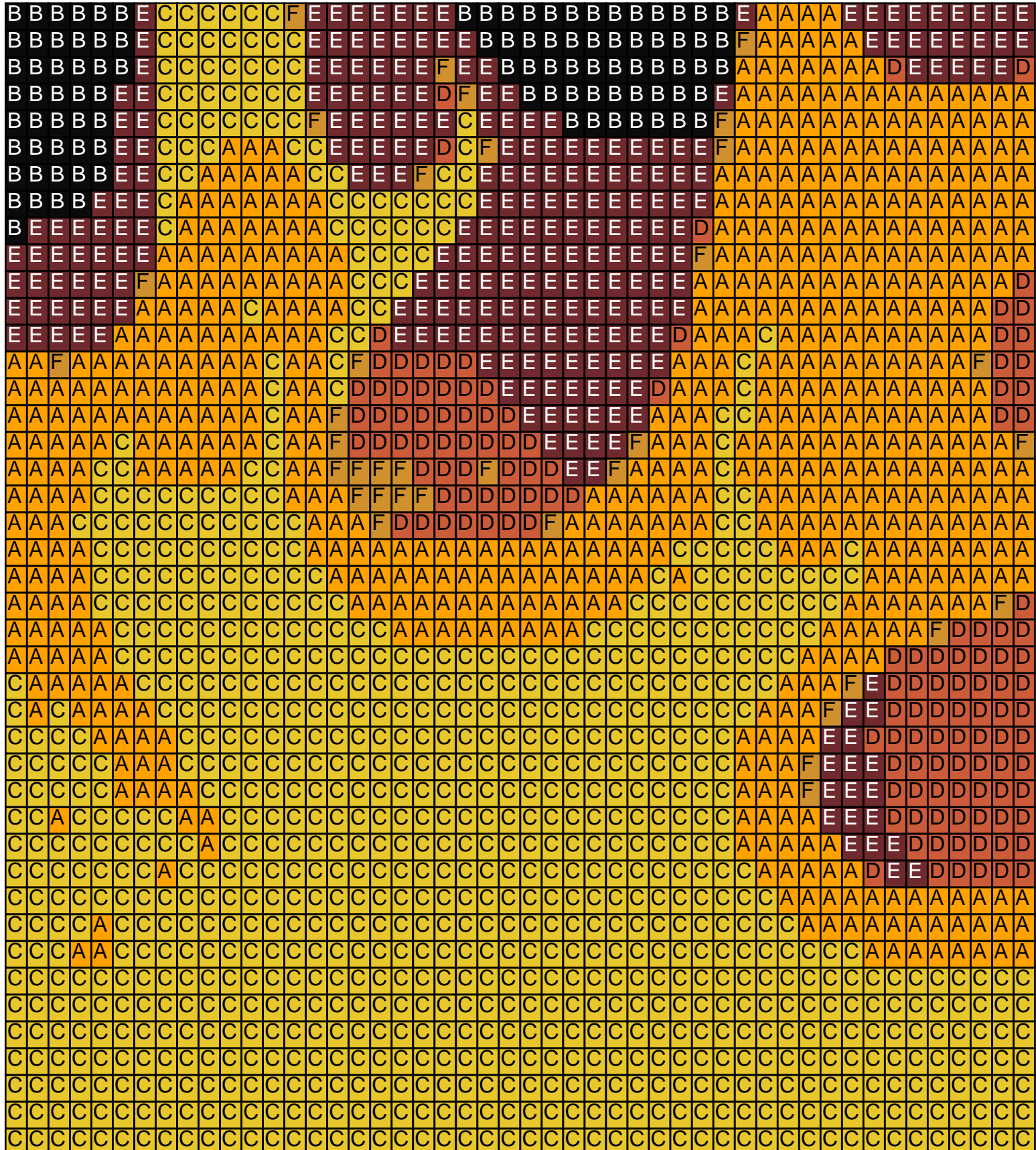
 Chart #:B
11-86
Jet Black Metallic AB
Count:5442

 Chart #:C
11-128
Citrine Opaque Luster
Count:1348

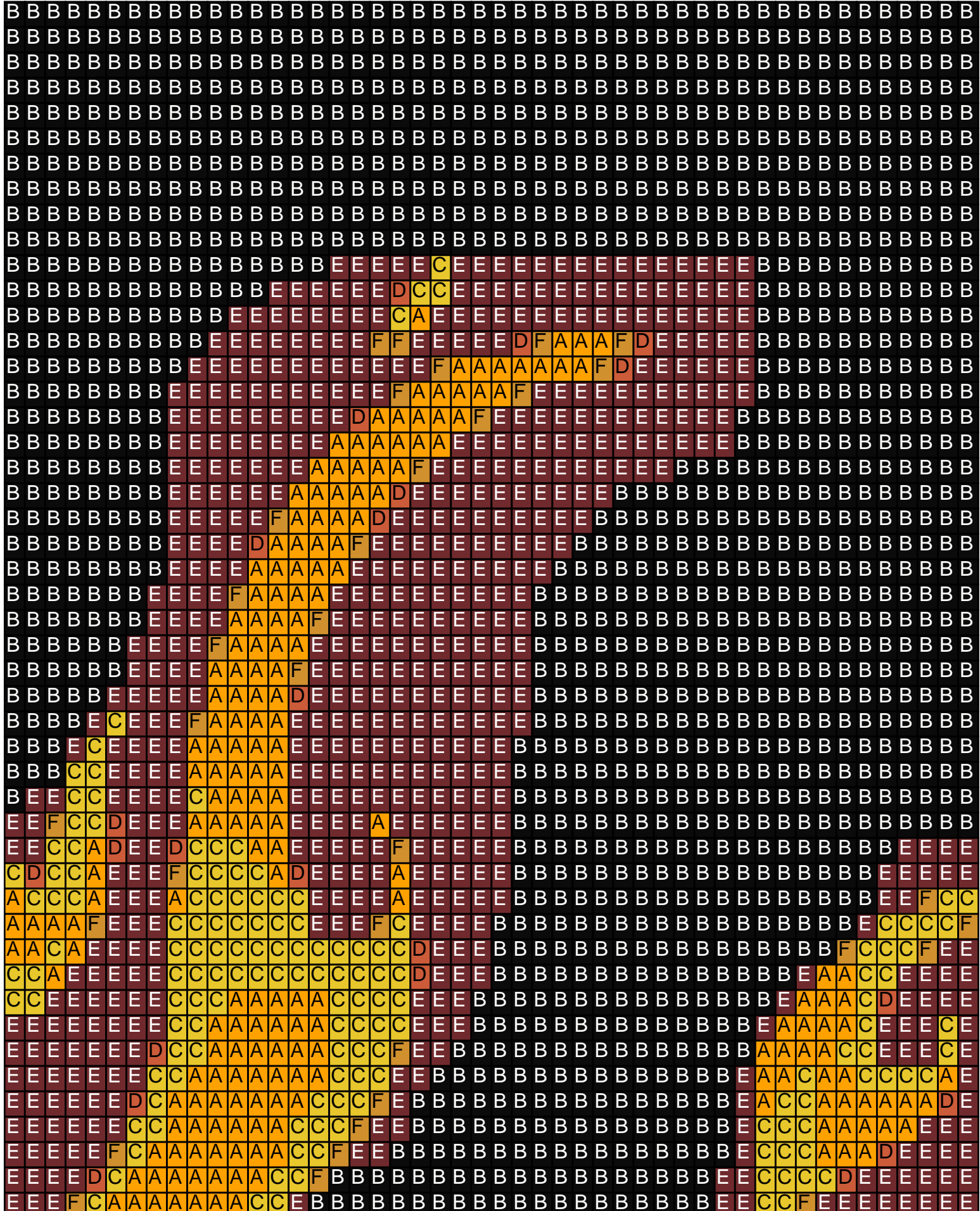
 Chart #:D
11-941
Transparent Rootbeer
Count:425

 Chart #:E
11-2153
Transparent Dark Cherry Amber
Count:1750

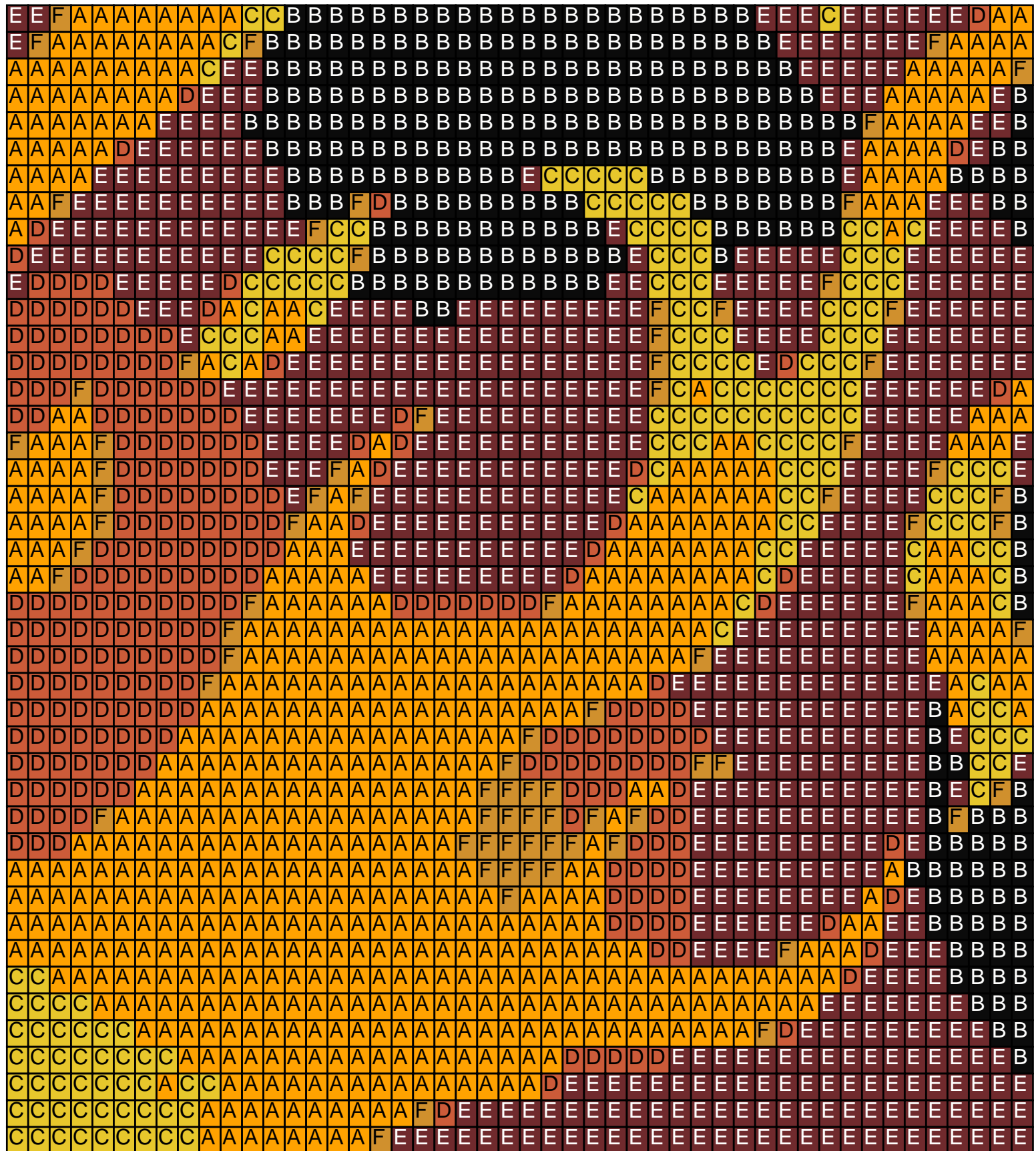
 Chart #:F
11-2155
Transparent Golden Amber
Count:181



fair



fair



fair



fair



Word Chart

Row 1 (L) (117)11-86

Row 2 (R) (117)11-86

Row 3 (L) (117)11-86

Row 4 (R) (117)11-86

Row 5 (L) (9)11-86, (1)11-2153, (107)11-86

Row 6 (R) (117)11-86

Row 7 (L) (117)11-86

Row 8 (R) (117)11-86

Row 9 (L) (117)11-86

Row 10 (R) (117)11-86

Row 11 (L) (32)11-86, (15)11-2153, (1)11-128, (5)11-2153, (64)11-86

Row 12 (R) (61)11-86, (6)11-2153, (1)11-941, (2)11-128, (15)11-2153, (32)11-86

Row 13 (L) (32)11-86, (16)11-2153, (1)11-42BF, (1)11-128, (8)11-2153, (59)11-86

Row 14 (R) (58)11-86, (8)11-2153, (2)11-2155, (5)11-2153, (1)11-941, (1)11-2155, (3)11-42BF, (1)11-2155, (1)11-941, (5)11-2153, (32)11-86

Row 15 (L) (32)11-86, (6)11-2153, (1)11-941, (1)11-2155, (7)11-42BF, (1)11-2155, (12)11-2153, (57)11-86

Row 16 (R) (56)11-86, (11)11-2153, (1)11-2155, (5)11-42BF, (1)11-2155, (11)11-2153, (32)11-86

Row 17 (L) (33)11-86, (12)11-2153, (1)11-2155, (5)11-42BF, (1)11-941, (9)11-2153, (56)11-86

Row 18 (R) (56)11-86, (8)11-2153, (6)11-42BF, (14)11-2153, (33)11-86

Row 19 (L) (36)11-86, (12)11-2153, (1)11-2155, (5)11-42BF, (7)11-2153, (56)11-86

Row 20 (R) (56)11-86, (6)11-2153, (5)11-42BF, (1)11-941, (10)11-2153, (39)11-86

Row 21 (L) (40)11-86, (10)11-2153, (1)11-941, (4)11-42BF, (1)11-2155, (5)11-2153, (56)11-86

Row 22 (R) (56)11-86, (4)11-2153, (1)11-941, (4)11-42BF, (1)11-2155, (10)11-2153, (41)11-86

Row 23 (L) (42)11-86, (10)11-2153, (5)11-42BF, (4)11-2153, (56)11-86

Row 24 (R) (55)11-86, (4)11-2153, (1)11-2155, (4)11-42BF, (10)11-2153, (43)11-86

Row 25 (L) (43)11-86, (10)11-2153, (1)11-2155, (4)11-42BF, (4)11-2153, (55)11-86

Row 26 (R) (54)11-86, (4)11-2153, (1)11-2155, (4)11-42BF, (11)11-2153, (43)11-86

Row 27 (L) (43)11-86, (11)11-2153, (1)11-2155, (4)11-42BF, (4)11-2153, (54)11-86

Row 28 (R) (28)11-86, (6)11-2153, (19)11-86, (5)11-2153, (4)11-42BF, (1)11-941, (11)11-2153, (43)11-86

Row 29 (L) (18)11-86, (1)11-2153, (24)11-86, (12)11-2153, (4)11-42BF, (1)11-2155, (3)11-2153, (1)11-128, (1)11-2153, (18)11-86, (9)11-2153, (25)11-86

Row 30 (R) (24)11-86, (4)11-2153, (1)11-941, (3)11-2155, (1)11-941, (1)11-2153, (17)11-86, (1)11-2153, (1)11-128, (4)11-2153, (5)11-42BF, (11)11-2153, (26)11-86, (2)11-2155, (16)11-86

Row 31 (L) (16)11-86, (1)11-42BF, (27)11-86, (11)11-2153, (5)11-42BF, (4)11-2153, (2)11-128, (17)11-86, (5)11-2153, (1)11-2155, (3)11-42BF, (1)11-2155, (2)11-2153, (22)11-86

Row 32 (R) (21)11-86, (1)11-2153, (4)11-42BF, (7)11-2153, (16)11-86, (2)11-2153, (2)11-128, (4)11-2153, (1)11-128, (4)11-42BF, (11)11-2153, (27)11-86, (1)11-42BF, (1)11-2153, (15)11-86

Row 33 (L) (16)11-86, (1)11-42BF, (1)11-2155, (26)11-86, (6)11-2153, (1)11-42BF, (4)11-2153, (5)11-42BF, (3)11-2153, (1)11-941, (2)11-128, (1)11-2155, (6)11-2153, (13)11-86, (7)11-2153, (4)11-42BF, (1)11-2153, (7)11-86, (1)11-2155, (11)11-86

Row 34 (R) (10)11-86, (1)11-2155, (1)11-128, (5)11-86, (1)11-2153, (4)11-42BF, (1)11-2155, (7)11-2153, (12)11-86, (8)11-2153, (2)11-128, (1)11-42BF, (1)11-941, (2)11-2153, (1)11-941, (3)11-128, (2)11-42BF, (5)11-2153, (1)11-2155, (5)11-2153, (19)11-86, (4)11-2153, (1)11-86, (1)11-2153, (2)11-128, (1)11-2153, (16)11-86

Row 35 (L) (17)11-86, (1)11-2153, (3)11-128, (5)11-2153, (18)11-86, (5)11-2153, (1)11-42BF, (4)11-2153, (1)11-941, (1)11-42BF, (4)11-128, (1)11-2155, (3)11-2153, (1)11-42BF, (2)11-128, (1)11-941, (1)11-128, (1)11-2155, (5)11-2153, (14)11-86, (6)11-2153, (1)11-2155, (1)11-42BF, (3)11-128, (1)11-2155, (1)11-2153, (3)11-86, (2)11-128, (1)11-2155, (9)11-86

Row 36 (R) (8)11-86, (1)11-2153, (3)11-128, (2)11-86, (1)11-2153, (1)11-2155, (2)11-128, (1)11-42BF, (1)11-128, (1)11-941, (6)11-2153, (15)11-86, (6)11-2153, (1)11-42BF, (3)11-128, (1)11-42BF, (3)11-2153, (1)11-42BF, (6)11-128, (4)11-2153,

(1)11-42BF, (5)11-2153, (18)11-86, (2)11-2153, (1)11-2155, (3)11-128, (1)11-2155, (19)11-86

Row 37 (L) (21)11-86, (1)11-2155, (4)11-128, (1)11-2153, (18)11-86, (4)11-2153, (1)11-128, (1)11-2155, (3)11-2153, (7)11-128, (3)11-2153, (1)11-2155, (4)11-42BF, (6)11-2153, (17)11-86, (5)11-2153, (1)11-941, (5)11-128, (1)11-2153, (1)11-86, (1)11-2155, (1)11-42BF, (2)11-128, (8)11-86

Row 38 (R) (8)11-86, (2)11-128, (1)11-42BF, (1)11-86, (1)11-2153, (5)11-128, (1)11-2155, (5)11-2153, (18)11-86, (6)11-2153, (2)11-42BF, (1)11-128, (1)11-42BF, (4)11-2153, (12)11-128, (1)11-941, (3)11-2153, (17)11-86, (1)11-2155, (3)11-128, (1)11-2155, (3)11-2153, (20)11-86

Row 39 (L) (20)11-86, (5)11-2153, (2)11-128, (2)11-42BF, (1)11-2153, (15)11-86, (3)11-2153, (1)11-941, (12)11-128, (5)11-2153, (1)11-42BF, (2)11-128, (1)11-2155, (5)11-2153, (19)11-86, (5)11-2153, (6)11-128, (1)11-2153, (1)11-86, (1)11-2155, (1)11-128, (8)11-86

Row 40 (R) (10)11-86, (1)11-2153, (1)11-2155, (5)11-128, (5)11-2153, (19)11-86, (6)11-2153, (3)11-128, (6)11-2153, (3)11-128, (5)11-42BF, (4)11-128, (3)11-2153, (15)11-86, (1)11-2153, (3)11-42BF, (1)11-128, (1)11-941, (5)11-2153, (20)11-86

Row 41 (L) (20)11-86, (2)11-2153, (1)11-128, (3)11-2153, (1)11-128, (4)11-42BF, (1)11-2153, (14)11-86, (3)11-2153, (4)11-128, (6)11-42BF, (2)11-128, (8)11-2153, (2)11-128, (6)11-2153, (19)11-86, (4)11-2153, (1)11-941, (5)11-128, (1)11-2155, (10)11-86

Row 42 (R) (9)11-86, (1)11-2153, (6)11-128, (4)11-2153, (19)11-86, (16)11-2153, (1)11-941, (2)11-128, (6)11-42BF, (3)11-128, (1)11-2155, (2)11-2153, (15)11-86, (4)11-42BF, (2)11-128, (3)11-2153, (1)11-128, (3)11-2153, (19)11-86

Row 43 (L) (18)11-86, (4)11-2153, (1)11-42BF, (4)11-128, (2)11-42BF, (1)11-128, (2)11-42BF, (1)11-2153, (15)11-86, (2)11-2153, (3)11-128, (7)11-42BF, (2)11-128, (10)11-2153, (1)11-941, (6)11-2153, (18)11-86, (4)11-2153, (1)11-941, (6)11-128, (9)11-86

Row 44 (R) (8)11-86, (1)11-2153, (6)11-128, (5)11-2153, (17)11-86, (3)11-2153, (1)11-2155, (2)11-42BF, (11)11-2153, (1)11-941, (1)11-128, (7)11-42BF, (3)11-128, (1)11-2155, (1)11-2153, (16)11-86, (1)11-2153, (1)11-42BF, (2)11-128, (6)11-42BF, (1)11-941, (5)11-2153, (17)11-86

Row 45 (L) (17)11-86, (7)11-2153, (5)11-42BF, (3)11-128, (1)11-2153, (16)11-86, (2)11-2153, (1)11-2155, (3)11-128, (6)11-42BF, (2)11-128, (12)11-2153, (1)11-941, (2)11-42BF, (1)11-2155, (1)11-2153, (18)11-86, (4)11-2153, (1)11-2155, (6)11-128, (8)11-86

Row 46 (R) (7)11-86, (1)11-2153, (6)11-128, (6)11-2153, (16)11-86, (1)11-2153, (3)11-42BF, (1)11-941, (12)11-2153, (1)11-2155, (1)11-128, (7)11-42BF, (2)11-128, (1)11-2155, (2)11-2153, (17)11-86, (1)11-2153, (3)11-128, (3)11-42BF, (1)11-941, (9)11-2153, (16)11-86

Row 47 (L) (16)11-86, (11)11-2153, (1)11-941, (4)11-128, (2)11-2153, (19)11-86, (1)11-2155, (2)11-128, (7)11-42BF, (1)11-128, (1)11-941, (12)11-2153, (1)11-941, (3)11-42BF, (1)11-2153, (15)11-86, (6)11-2153, (6)11-128, (1)11-2155, (7)11-86

Row 48 (R) (7)11-86, (7)11-128, (6)11-2153, (15)11-86, (1)11-2155, (3)11-42BF, (12)11-2153, (1)11-2155, (1)11-128, (7)11-42BF, (2)11-128, (1)11-2153, (20)11-86, (2)11-2153, (2)11-128, (1)11-2155, (13)11-2153, (16)11-86

Row 49 (L) (14)11-86, (1)11-2153, (8)11-42BF, (1)11-941, (6)11-2153, (1)11-128, (3)11-2153, (22)11-86, (2)11-128, (8)11-42BF, (1)11-2155, (11)11-2153, (4)11-42BF, (1)11-2153, (13)11-86, (7)11-2153, (1)11-2155, (6)11-128, (1)11-2153, (6)11-86

Row 50 (R) (6)11-86, (1)11-2153, (7)11-128, (8)11-2153, (12)11-86, (1)11-2155, (5)11-42BF, (9)11-2153, (1)11-2155, (8)11-42BF, (1)11-128, (1)11-2155, (24)11-86, (7)11-2153, (1)11-2155, (6)11-42BF, (1)11-2155, (2)11-2153, (16)11-86

Row 51 (L) (20)11-86, (1)11-2153, (1)11-2155, (5)11-42BF, (5)11-2153, (25)11-86, (2)11-2153, (1)11-128, (9)11-42BF, (1)11-941, (5)11-2153, (1)11-941, (7)11-42BF, (11)11-86, (2)11-2153, (1)11-2155, (6)11-2153, (7)11-128, (1)11-2153, (6)11-86

Row 52 (R) (5)11-86, (2)11-2153, (7)11-128, (6)11-2153, (1)11-941, (1)11-2155, (2)11-2153, (9)11-86, (1)11-2153, (22)11-42BF, (1)11-941, (3)11-2153, (26)11-86, (3)11-2153, (5)11-42BF, (1)11-2153, (22)11-86

Row 53 (L) (22)11-86, (2)11-2153, (4)11-42BF, (1)11-2155, (29)11-86, (4)11-2153, (21)11-42BF, (1)11-2155, (7)11-86, (4)11-2153, (1)11-128, (6)11-2153, (1)11-2155, (7)11-128, (2)11-2153, (5)11-86

Row 54 (R) (5)11-86, (2)11-2153, (3)11-128, (3)11-42BF, (2)11-128, (5)11-2153, (1)11-941, (1)11-128, (1)11-2155,

fair

(10)11-2153, (1)11-2155, (19)11-42BF, (1)11-941, (6)11-2153, (27)11-86, (1)11-2153, (4)11-42BF, (1)11-941, (1)11-2153, (23)11-86

Row 55 (L) (25)11-86, (4)11-42BF, (1)11-2153, (9)11-86, (5)11-128, (1)11-2153, (11)11-86, (9)11-2153, (19)11-42BF, (11)11-2153, (2)11-128, (1)11-2155, (3)11-2153, (2)11-128, (5)11-42BF, (2)11-128, (2)11-2153, (5)11-86

Row 56 (R) (4)11-86, (3)11-2153, (1)11-128, (7)11-42BF, (7)11-128, (11)11-2153, (17)11-42BF, (1)11-2155, (10)11-2153, (3)11-86, (1)11-2155, (1)11-941, (9)11-86, (5)11-128, (7)11-86, (1)11-2155, (3)11-42BF, (3)11-2153, (23)11-86

Row 57 (L) (22)11-86, (4)11-2153, (1)11-128, (1)11-42BF, (2)11-128, (6)11-86, (4)11-128, (1)11-2153, (11)11-86, (2)11-128, (1)11-2155, (12)11-2153, (1)11-941, (16)11-42BF, (1)11-941, (11)11-2153, (6)11-128, (7)11-42BF, (1)11-128, (6)11-2153, (1)11-86

Row 58 (R) (7)11-2153, (9)11-42BF, (4)11-128, (12)11-2153, (1)11-2155, (15)11-42BF, (1)11-941, (11)11-2153, (4)11-128, (1)11-2155, (12)11-86, (1)11-2153, (3)11-128, (1)11-86, (5)11-2153, (3)11-128, (6)11-2153, (21)11-86

Row 59 (L) (20)11-86, (7)11-2153, (3)11-128, (1)11-2155, (5)11-2153, (3)11-128, (2)11-2153, (12)11-86, (5)11-128, (1)11-941, (5)11-2153, (4)11-941, (1)11-2153, (1)11-941, (15)11-42BF, (13)11-2153, (3)11-128, (9)11-42BF, (1)11-2155, (6)11-2153

Row 60 (R) (6)11-2153, (5)11-42BF, (1)11-128, (4)11-42BF, (2)11-128, (14)11-2153, (14)11-42BF, (8)11-941, (3)11-2153, (1)11-941, (1)11-42BF, (1)11-128, (2)11-42BF, (1)11-128, (4)11-2153, (2)11-86, (9)11-2153, (1)11-2155, (2)11-128, (1)11-2155, (4)11-2153, (3)11-128, (1)11-2155, (7)11-2153, (20)11-86

Row 61 (L) (20)11-86, (8)11-2153, (3)11-128, (4)11-2153, (3)11-128, (1)11-2155, (16)11-2153, (2)11-42BF, (3)11-128, (1)11-2153, (10)11-941, (10)11-42BF, (1)11-128, (3)11-42BF, (1)11-941, (13)11-2153, (1)11-941, (2)11-128, (10)11-42BF, (5)11-2153

Row 62 (R) (2)11-42BF, (1)11-2155, (9)11-42BF, (1)11-128, (2)11-42BF, (1)11-128, (1)11-2155, (5)11-941, (9)11-2153, (3)11-42BF, (1)11-128, (10)11-42BF, (1)11-2155, (10)11-941, (1)11-2155, (1)11-42BF, (1)11-128, (1)11-42BF, (1)11-941, (17)11-2153, (1)11-2155, (4)11-128, (1)11-2153, (1)11-941, (3)11-128, (1)11-2155, (8)11-2153, (20)11-86

Row 63 (L) (19)11-86, (1)11-2155, (2)11-42BF, (1)11-941, (6)11-2153, (7)11-128, (1)11-42BF, (1)11-128, (1)11-2155, (20)11-2153, (6)11-941, (1)11-2155, (5)11-941, (11)11-42BF, (1)11-128, (3)11-42BF, (1)11-941, (7)11-2153, (7)11-941, (1)11-128, (2)11-42BF, (1)11-128, (12)11-42BF

Row 64 (R) (12)11-42BF, (1)11-128, (2)11-42BF, (1)11-2155, (8)11-941, (6)11-2153, (3)11-42BF, (2)11-128, (11)11-42BF, (4)11-941, (2)11-42BF, (7)11-941, (7)11-2153, (1)11-941, (1)11-2155, (10)11-2153, (10)11-128, (5)11-2153, (3)11-42BF, (1)11-2153, (20)11-86

Row 65 (L) (21)11-86, (1)11-2153, (3)11-42BF, (4)11-2153, (1)11-2155, (4)11-128, (2)11-42BF, (3)11-128, (11)11-2153, (1)11-941, (1)11-42BF, (1)11-941, (4)11-2153, (7)11-941, (1)11-2155, (3)11-42BF, (2)11-2155, (13)11-42BF, (1)11-128, (3)11-42BF, (1)11-2155, (4)11-2153, (9)11-941, (1)11-2155, (2)11-42BF, (1)11-128, (6)11-42BF, (1)11-128, (5)11-42BF

Row 66 (R) (4)11-42BF, (2)11-128, (5)11-42BF, (2)11-128, (2)11-42BF, (4)11-2155, (3)11-941, (1)11-2155, (3)11-941, (2)11-2153, (1)11-2155, (4)11-42BF, (1)11-128, (18)11-42BF, (1)11-2155, (7)11-941, (3)11-2153, (1)11-2155, (1)11-42BF, (1)11-941, (11)11-2153, (1)11-941, (1)11-128, (5)11-42BF, (3)11-128, (4)11-2153, (1)11-2155, (3)11-128, (1)11-2153, (21)11-86

Row 67 (L) (22)11-86, (1)11-2155, (3)11-128, (4)11-2153, (1)11-2155, (2)11-128, (6)11-42BF, (1)11-128, (12)11-2153, (1)11-2155, (1)11-42BF, (1)11-2155, (1)11-2153, (8)11-941, (1)11-2155, (17)11-42BF, (2)11-128, (6)11-42BF, (7)11-941, (4)11-2155, (3)11-42BF, (9)11-128, (4)11-42BF

Row 68 (R) (3)11-42BF, (11)11-128, (3)11-42BF, (1)11-2155, (7)11-941, (1)11-2155, (7)11-42BF, (2)11-128, (17)11-42BF, (1)11-2155, (8)11-941, (1)11-2155, (2)11-42BF, (1)11-941, (11)11-2153, (1)11-941, (7)11-42BF, (2)11-128, (4)11-2153, (1)11-2155, (3)11-128, (1)11-2155, (22)11-86

Row 69 (L) (22)11-86, (2)11-128, (2)11-42BF, (1)11-128, (5)11-2153, (2)11-128, (7)11-42BF, (1)11-941, (11)11-2153, (3)11-42BF, (9)11-941, (1)11-2155, (11)11-42BF, (1)11-128, (3)11-42BF, (5)11-128, (17)11-42BF, (10)11-128, (4)11-42BF

Row 70 (R) (4)11-42BF, (11)11-128, (15)11-42BF, (1)11-128, (1)11-42BF, (8)11-128, (10)11-42BF, (1)11-2155, (9)11-941, (5)11-42BF, (9)11-2153, (1)11-941, (8)11-42BF, (1)11-128, (1)11-941, (5)11-2153, (1)11-128, (3)11-42BF, (1)11-128, (22)11-86

Row 71 (L) (22)11-86, (1)11-128, (3)11-42BF, (1)11-2155, (6)11-2153, (1)11-941, (1)11-128, (8)11-42BF, (1)11-2155, (7)11-941, (6)11-42BF, (1)11-2155, (12)11-941, (1)11-2155, (7)11-42BF, (10)11-128, (13)11-42BF, (12)11-128, (4)11-42BF

Row 72 (R) (5)11-42BF, (13)11-128, (9)11-42BF, (11)11-128, (5)11-42BF, (1)11-2155, (14)11-941, (1)11-2155, (22)11-42BF, (1)11-128, (9)11-2153, (4)11-42BF, (1)11-2155, (21)11-86

Row 73 (L) (21)11-86, (5)11-42BF, (10)11-2153, (1)11-2155, (21)11-42BF, (1)11-2155, (17)11-941, (4)11-42BF, (32)11-128, (5)11-42BF

Row 74 (R) (1)11-128, (5)11-42BF, (30)11-128, (3)11-42BF, (1)11-2155, (1)11-2153, (16)11-941, (1)11-2155, (20)11-42BF, (1)11-941, (13)11-2153, (1)11-42BF, (1)11-128, (2)11-42BF, (21)11-86

Row 75 (L) (21)11-86, (1)11-42BF, (2)11-128, (1)11-42BF, (1)11-86, (11)11-2153, (4)11-941, (1)11-2155, (18)11-42BF, (16)11-941, (2)11-2153, (1)11-2155, (3)11-42BF, (28)11-128, (4)11-42BF, (1)11-128, (1)11-42BF, (1)11-128

Row 76 (R) (4)11-128, (4)11-42BF, (26)11-128, (4)11-42BF, (2)11-2153, (16)11-941, (16)11-42BF, (1)11-2155, (8)11-941, (10)11-2153, (1)11-86, (1)11-2153, (3)11-128, (21)11-86

Row 77 (L) (21)11-86, (1)11-2153, (2)11-128, (2)11-86, (9)11-2153, (2)11-2155, (8)11-941, (1)11-2155, (16)11-42BF, (14)11-941, (3)11-2153, (1)11-2155, (3)11-42BF, (26)11-128, (3)11-42BF, (5)11-128

Row 78 (R) (5)11-128, (4)11-42BF, (25)11-128, (3)11-42BF, (1)11-2155, (3)11-2153, (13)11-941, (16)11-42BF, (4)11-2155, (3)11-941, (2)11-42BF, (1)11-941, (11)11-2153, (1)11-86, (1)11-2153, (1)11-128, (1)11-2155, (22)11-86

Row 79 (L) (24)11-86, (1)11-2155, (1)11-86, (11)11-2153, (2)11-941, (1)11-2155, (1)11-42BF, (1)11-2155, (1)11-941, (4)11-2155, (17)11-42BF, (1)11-2155, (11)11-941, (3)11-2153, (4)11-42BF, (24)11-128, (2)11-42BF, (5)11-128, (1)11-42BF, (2)11-128

Row 80 (R) (9)11-128, (1)11-42BF, (24)11-128, (5)11-42BF, (3)11-2153, (9)11-941, (18)11-42BF, (6)11-2155, (1)11-42BF, (1)11-2155, (3)11-941, (9)11-2153, (1)11-941, (1)11-2153, (26)11-86

Row 81 (L) (27)11-86, (1)11-42BF, (9)11-2153, (4)11-941, (2)11-42BF, (4)11-2155, (22)11-42BF, (5)11-941, (2)11-2153, (1)11-941, (5)11-42BF, (27)11-128, (1)11-42BF, (7)11-128

Row 82 (R) (36)11-128, (35)11-42BF, (1)11-2155, (4)11-42BF, (4)11-941, (8)11-2153, (1)11-42BF, (1)11-941, (1)11-2153, (26)11-86

Row 83 (L) (26)11-86, (2)11-2153, (2)11-42BF, (1)11-941, (6)11-2153, (4)11-941, (39)11-42BF, (32)11-128, (1)11-42BF, (4)11-128

Row 84 (R) (3)11-128, (2)11-42BF, (35)11-128, (38)11-42BF, (2)11-941, (4)11-2153, (1)11-2155, (3)11-42BF, (1)11-941, (3)11-2153, (25)11-86

Row 85 (L) (25)11-86, (4)11-2153, (1)11-941, (37)11-42BF, (50)11-128

Row 86 (R) (52)11-128, (34)11-42BF, (7)11-2153, (24)11-86

Row 87 (L) (23)11-86, (9)11-2153, (1)11-941, (1)11-2155, (29)11-42BF, (54)11-128

Row 88 (R) (56)11-128, (18)11-42BF, (5)11-941, (16)11-2153, (22)11-86

Row 89 (L) (21)11-86, (22)11-2153, (1)11-941, (15)11-42BF, (2)11-128, (1)11-42BF, (55)11-128

Row 90 (R) (57)11-128, (10)11-42BF, (1)11-2155, (1)11-941, (27)11-2153, (21)11-86

Row 91 (L) (19)11-86, (32)11-2153, (1)11-2155, (8)11-42BF, (57)11-128